



# ANLY COUNTER

## ACK TWIN COUNTER



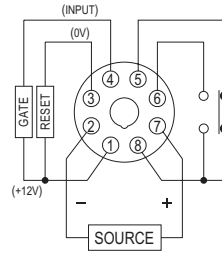
### CHARACTERISTIC :

- Adjustable multiple ON/OFF repeat cycles
- Rising-edge trigger (Power-on) or Falling-edge trigger (Shut-off)
- ON/OFF cycles up to 99 times
- CE certified

### SPECIFICATION :

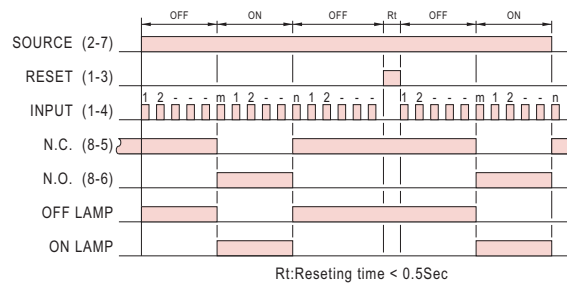
|                                   |  |
|-----------------------------------|--|
| Operating voltage                 | DC(V): 12, 24<br>AC(V): 12, 24, 110, 220, 240            |
| Allowable operating voltage range | 85~110% of rated operating voltage                       |
| Rated frequency                   | 50 / 60 Hz   |
| Contact rating                    | 250VAC 5A (resistive load)                               |
| Count speed                       | MAX 60 cps   |
| Reset time                        | MAX 0.5S   |
| Power consumption                 | Approx. 3VA  |
| Life                              | Mechanical: 5,000,000 times<br>Electrical: 100,000 times |
| Ambient temperature               | -10 ~ +50°C  |
| Ambient humidity                  | MAX 85%RH  |
| Weight                            | Approx. 180g   |

## CONNECTION :



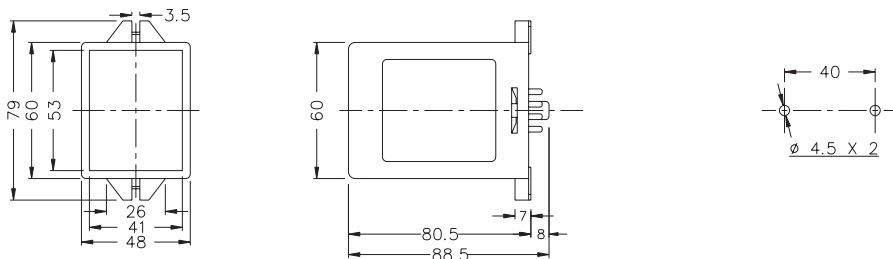
Note: When it using with Proximity or photoelectric switch, connect (+) to pin(1),(-) to pin(3), (input) to pin(4).

## TIMING CHART :

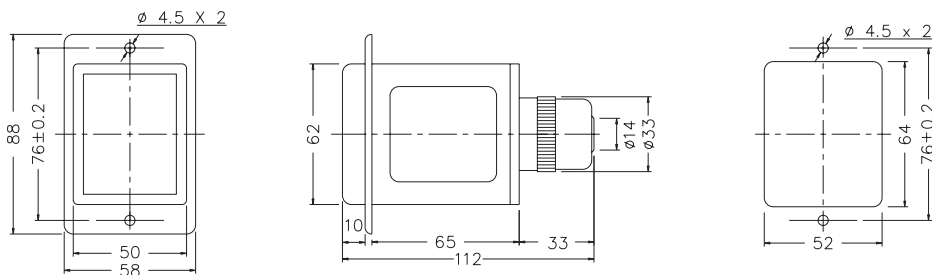


## DIMENSIONS : (mm)

N type(Surface Mounting): Using 8PFA Socket



Y type(Flush Mounting): Using US-08 Socket or P3G-08 Socket



**ANLY ELECTRONICS CO., LTD.**

<http://www.anly.com.tw>

**TAIWAN MAIN OFFICE : ANLY ELECTRONICS CO., LTD.**

No.19, Lane 202, Fushou St., Shinjuang City, Taipei, Taiwan 242  
TEL: +886-2-2996-3202 FAX: +886-2-2996-2017

**MALAYSIA BRANCH : JUSTY ELECTRONICS (M) SDN, BHD.**

No.1, Jalan 6/89B, Kawasan Perindustrian Trisegi, Batu 3 1/2 Off Jalan Sungei Besi, 57100 Kuala Lumpur, Malaysia  
TEL: +60-3-7983-5758 FAX: +60-3-7981-5052

**HONG KONG BRANCH : ANLY ELECTRONICS (HK) LTD.**

Flat K, 13/F, Edward Mansion, 141 Prince Edward Road W., Kowloon, Hong Kong  
TEL: +852-2397-2505 FAX: +852-2397-6080

**SHANGHAI BRANCH : ANLY TECHNOLOGY (WUXI) CO., LTD.**

Room 13G, No.831, Xinzha Rd., Jingnan District, Shanghai, China 200041  
TEL: +86-21-6218-3300 FAX: +86-21-6217-5911

NO. ACK-G-A