



ANLY TIMER

AH5N WIDE VOLTAGE MULTI-RANGE ANALOGUE TIMER



CHARACTERISTIC :

- Wide operating voltage range in a single unit, from AC/DC 24V~240V
- 8 timing ranges from 1sec to 600hour by pushwheel switch
- 2 modes selectable via slide switch: Mode A (2C) for DPDT time-limiting output contacts and Mode B (1A1C) for SPDT instantaneous and time-limiting output contacts
- UL, C-UL recognized and CE certified

SPECIFICATION :

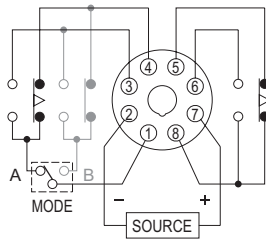
Operating voltage	AC/DC(V): 24 ~ 240
Allowable operating voltage range	85~110% of rated operating voltage
Rated frequency	50 / 60 Hz
Contact rating	250VAC 5A (resistive load)
Reset time	MAX 0.2S
Power consumption	Approx. 2VA
Life	Mechanical: 5,000,000 times Electrical: 100,000 times
Ambient temperature	-10 ~ +50°C
Ambient humidity	MAX 85%RH
Weight	Approx. 130g

TYPE SELECTION :

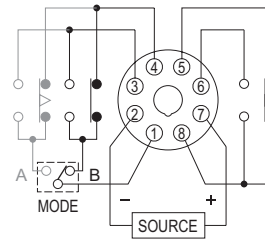
Type	AH5N
Output contact	Mode A / B
Time range	1S / 10S / 1M / 10M / 1H / 10H / 60H / 600H

CONNECTION :

2C, Mode A

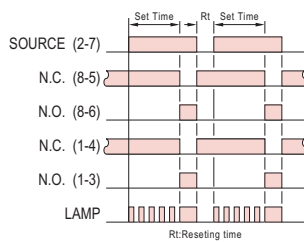


1A1C, Mode B

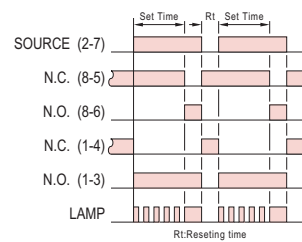


TIMING CHART :

2C, Mode A

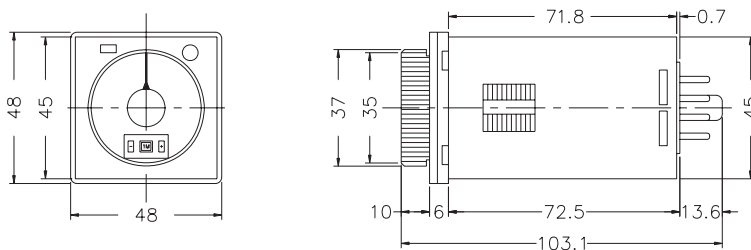


1A1C, Mode B

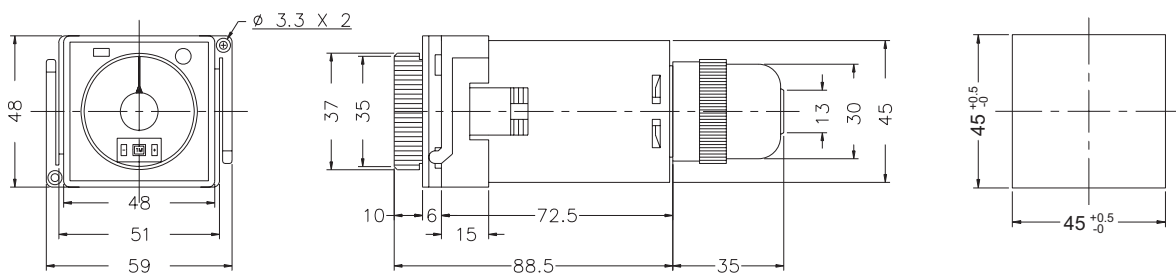


DIMENSIONS : (mm)

N type(Surface Mounting): Using P2CF-08 Socket or PF085A Socket



Y type(Flush Mounting): Using Y50 Frame & US-08 Socket or P3G-08 Socket



ANLY ELECTRONICS CO., LTD.

<http://www.anly.com.tw>

TAIWAN MAIN OFFICE : ANLY ELECTRONICS CO., LTD.

No.19, Lane 202, Fushou St., Shinjuang City, Taipei, Taiwan 242
TEL: +886-2-2996-3202 FAX: +886-2-2996-2017

MALAYSIA BRANCH : JUSTY ELECTRONICS (M) SDN, BHD.

No.1, Jalan 6/89B, Kawasan Perindustrian Trisegi, Batu 3 1/2 Off Jalan Sungei Besi, 57100 Kuala Lumpur, Malaysia
TEL: +60-3-7983-5758 FAX: +60-3-7981-5052

HONG KONG BRANCH : ANLY ELECTRONICS (HK) LTD.

Flat K, 13/F, Edward Mansion, 141 Prince Edward Road W., Kowloon, Hong Kong
TEL: +852-2397-2505 FAX: +852-2397-6080

SHANGHAI BRANCH : ANLY TECHNOLOGY (WUXI) CO., LTD.

Room 13G, No.831, Xinzha Rd., Jingan District, Shanghai, China 200041
TEL: +86-21-6218-3300 FAX: +86-21-6217-5911

NO. AH5N-G-A