



# ANLY CONTROLLER

## AEVR-\_D MULTI-FUNCTIONABLE DIGITAL DC VOLTAGE CONTROLLER



### CHARACTERISTIC :

- Over voltage detection - 0.1sec~10sec adjustable tripping delay
- Under voltage detection - 0.1sec~10sec adjustable tripping delay
- Manual / Auto Reset selectable - 1sec or 5sec auto reset tripping delay

### SPECIFICATION :

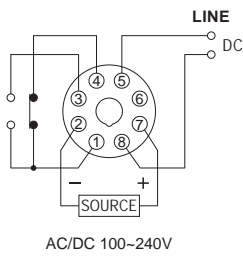
Operating voltage	AC/DC(V): 100 ~ 240(AEVR-□□D) DC(V): 8 ~ 60(AEVR-□D)
Allowable operating voltage range	85~110% of rated operating voltage
Rated frequency	50 / 60 Hz
Detecting method	Detect DC supply voltage
Detecting range	2C TYPE: 8 ~ 60VDC P TYPE: 77 ~ 143VDC L TYPE: 160 ~ 300VDC
Reset time	1S / 5S
Display	Display resolution ±1%
Contact rating	250VAC 5A (resistive load)
Power consumption	Approx. 3.3VA
Life	Mechanical: 5,000,000 times Electrical: 100,000 times
Ambient temperature	-10 ~ +50°C
Ambient humidity	MAX 85% RH
Weight	Approx. 135g

### TYPE SELECTION :

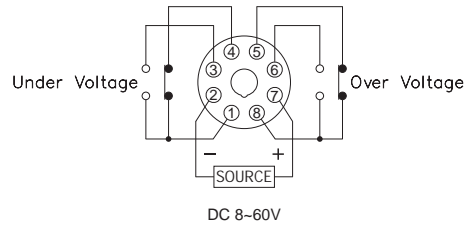
Operating voltage		AC/DC 100~240V		As same as detecting voltage	
Output contact		1C		2C	
Voltage detect range	8~60V	----	----	AEVR-ND	AEVR-YD
	77~143V	AEVR-NPD	AEVR-YPD	----	----
	160~300V	AEVR-NLD	AEVR-YLD	----	----

## CONNECTION :

1C

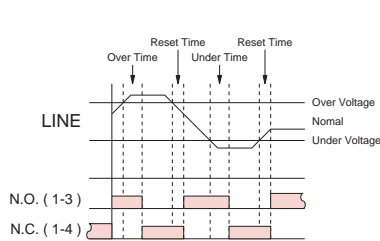


2C

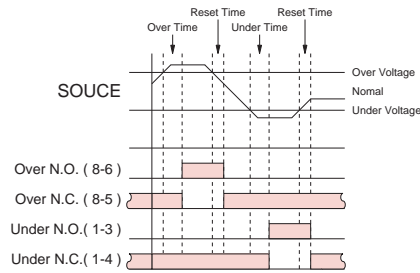


## TIMING CHART :

1C

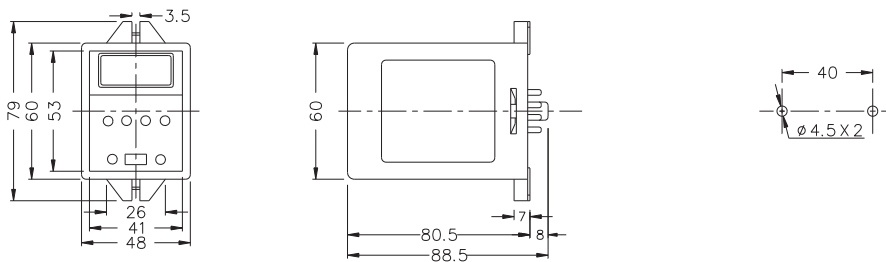


2C

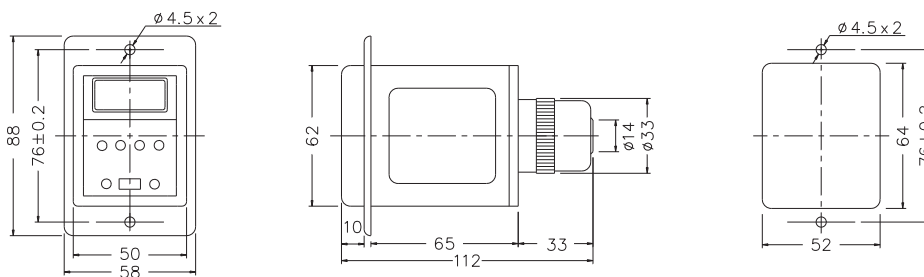


## DIMENSIONS : (mm)

N type(Surface Mounting): Using 8PFA Socket



Y type(Flush Mounting): Using US-08 Socket or P3G-08 Socket



**ANLY ELECTRONICS CO., LTD.**

<http://www.anly.com.tw>

**TAIWAN MAIN OFFICE : ANLY ELECTRONICS CO., LTD.**

No.19, Lane 202, Fushou St., Shinjuang City, Taipei, Taiwan 242  
TEL: +886-2-2996-3202 FAX: +886-2-2996-2017

**MALAYSIA BRANCH : JUSTY ELECTRONICS (M) SDN, BHD.**

No.1, Jalan 6/89B, Kawasan Perindustrian Triseigi, Batu 3 1/2 Off Jalan Sungei Besi, 57100 Kuala Lumpur, Malaysia  
TEL: +60-3-7983-5758 FAX: +60-3-7981-5052

**HONG KONG BRANCH : ANLY ELECTRONICS (HK) LTD.**

Flat K, 13/F, Edward Mansion, 141 Prince Edward Road W., Kowloon, Hong Kong  
TEL: +852-2397-2505 FAX: +852-2397-6080

**SHANGHAI BRANCH : ANLY TECHNOLOGY (WUXI) CO., LTD.**

Room 13G, No.831, Xinzha Rd., Jingan District, Shanghai, China 200041  
TEL: +86-21-6218-3300 FAX: +86-21-6217-5911

NO. AEVRD-I-C