



# ANLY CONTROLLER

## AG4Q-H EXCHANGE RELAY



### CHARACTERISTIC :

#### AG4Q-H and AG4Q-H3

- Dual motors alternating is possible (when in AUTO mode)
- Single motor operation, motor selectable (when in MANUAL mode)
- 3S tripping delay for AG4Q-H and non for AG4Q-H3

#### AG4Q-HS

- 1-3 input contact for motor-alternating signal
- Customized specification available

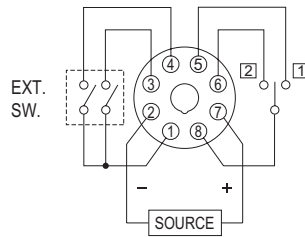
### SPECIFICATION :

Operating voltage	AC(V): 12, 24, 110, 220, 240
Allowable operating voltage range	85~110% of rated operating voltage
Rated frequency	50 / 60 Hz
Contact rating	250VAC 5A (resistive load)
Reset time	MAX 0.3S
Power consumption	Approx. 3VA
Life	Mechanical: 5,000,000 times Electrical: 100,000 times
Ambient temperature	-10 ~ +50°C
Ambient humidity	MAX 85%RH
Weight	Approx. 210g

### TYPE SELECTION :

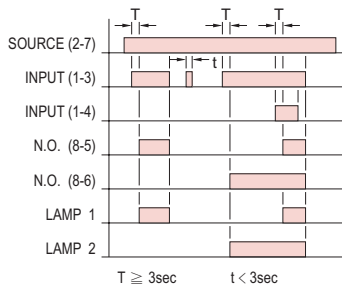
Type	AG4Q-H	AG4Q-H3	AG4Q-HS
Output contact(8-5,8-6)	1a , 1a	1a , 1a	1a , 1a
Input detect 3s delay	○	----	----
Single contact exchange operating	○	○	○(pluse)
Dual contact operating	○	○	----
Exchange operating (AUTO / MANUAL)	○	○	----

## CONNECTION :

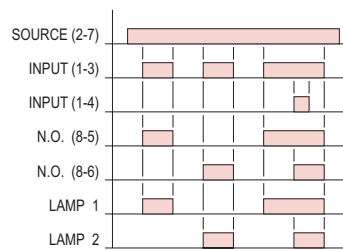


## TIMING CHART :

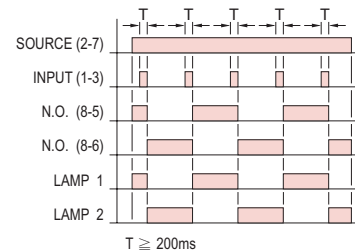
AG4Q-H



AG4Q-H3

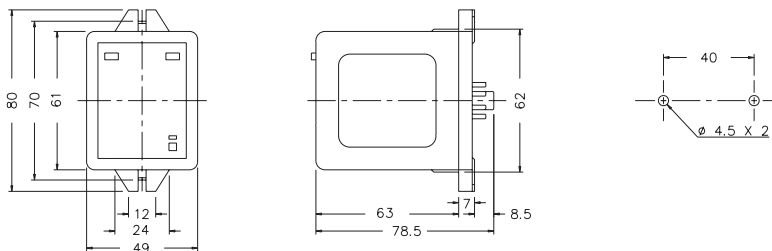


AG4Q-HS



## DIMENSIONS : (mm)

N type(Surface Mounting): Using 8PFA Socket



## ANLY ELECTRONICS CO., LTD.

<http://www.anly.com.tw>

### TAIWAN MAIN OFFICE : ANLY ELECTRONICS CO., LTD.

No.19, Lane 202, Fushou St., Xinzhuang Dist., New Taipei City 242, Taiwan  
TEL: +886-2-2996-3202 FAX: +886-2-2996-2017

### MALAYSIA BRANCH : JUSTY ELECTRONICS (M) SDN, BHD.

No.1, Jalan 6/89B, Kawasan Perindustrian Trisegi, Batu 3 1/2 Off Jalan Sungei Besi, 57100 Kuala Lumpur, Malaysia  
TEL: +60-3-7983-5758 FAX: +60-3-7981-5052

### HONG KONG BRANCH : ANLY ELECTRONICS (HK) LTD.

Flat K, 13/F, Edward Mansion, 141 Prince Edward Road W., Kowloon, Hong Kong  
TEL: +852-2397-2505 FAX: +852-2397-6080

### SHANGHAI BRANCH : ANLY TECHNOLOGY (WUXI) CO., LTD.

Room 13G, No.831, Xinzha Rd., Jingan District, Shanghai, China 200041  
TEL: +86-21-6218-3300 FAX: +86-21-6217-5911

NO. AG4QH-L-A