



# ANLY CONTROLLER

## APR-3,-3S / ASV-4 / ASM-170 3-PHASE SEQUENCE VOLTAGE RELAY



### CHARACTERISTIC :

- Only operational with correct power source voltage and phase sequence
- Suitable for main power source and motor starter circuit to prevent damage from insufficient phase or phase reversal
- Out-of-phase detection while the motor operating\*

Note: "\*" indicates not applicable to APR-3

### SPECIFICATION :

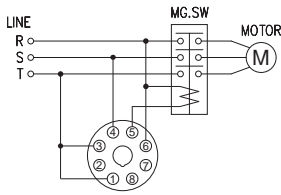
Operating voltage	AC(V) : 220, 240, 380, 415, 440(APR-3) AC(V) : 208~440 (APR-3S, ASV-4, ASM-170)
Allowable operating voltage range	85~110% of rated operating voltage
Rated frequency	50 / 60 Hz
Contact rating	250VAC 10A resistive load(APR-3) 250VAC 5A resistive load(others)
Reset time	APR-3: none, ASV-4: 300~600msec APR-3S, ASM-170: MAX 200msec
Power consumption	Approx. 2VA
Life	Mechanical: 5,000,000 times Electrical: 100,000 times
Ambient temperature	-10 ~ +50°C (without condensation & freezing)
Ambient humidity	MAX 85% RH (without condensation)
Altitude	MAX 2000m
Weight	APR-3, ASV-4 Approx. 85g APR-3S Approx. 70g ASM-170 Approx. 100g

### TYPE SELECTION :

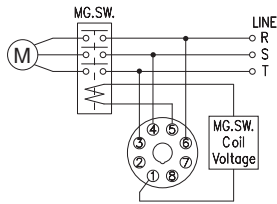
Type	APR-3	APR-3S	ASV-4	ASM-170
Source type	3-Phase 3-Wire	3-Phase 3-Wire	3-Phase 4-Wire	3-Phase 3-Wire
Number of pins	8P	8P	8P	11P
Indicator operating	none	Red LED(ON) Green LED(PWR)	Red LED(TRIP) Green LED(UP)	Red LED(ON) Green LED(POWER)

## CONNECTION :

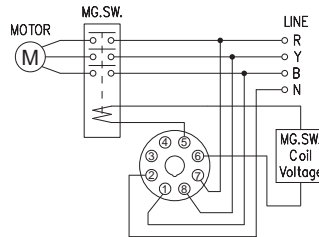
APR-3



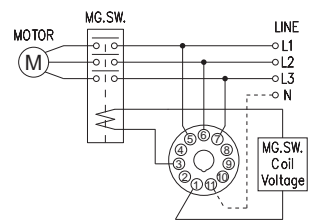
APR-3S



ASV-4

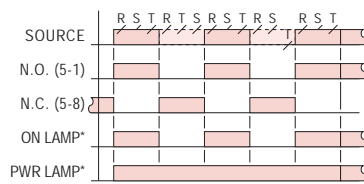


ASM-170



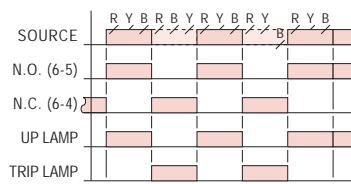
## TIMING CHART :

APR-3,3S

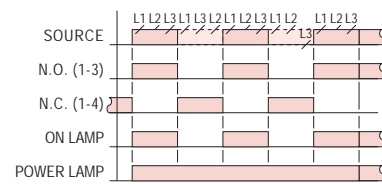


\*For APR-3S only

ASV-4

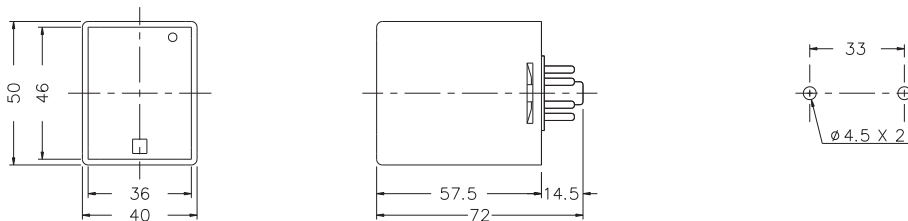


ASM-170

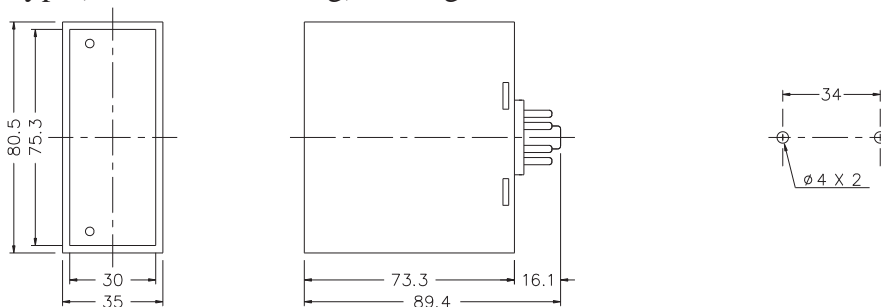


## DIMENSIONS : (mm)

APR-3, APR-3S, ASV-4 N type(Surface Mounting): Using PF085A Socket & FH-3



ASM-170 N type(Surface Mounting): Using PF-113BE Socket & A35



Tolerance:±0.1

## ANLY ELECTRONICS CO., LTD.

<http://www.anly.com.tw>

**TAIWAN MAIN OFFICE : ANLY ELECTRONICS CO., LTD.**

No.19, Lane 202, Fushou St., Xinzhuang Dist., New Taipei City 242, Taiwan  
TEL: +886-2-2996-3202 FAX: +886-2-2996-2017

**HONG KONG OFFICE : ANLY ELECTRONICS (HK) LTD.**

Flat K, 13/F, Edward Mansion, 141 Prince Edward Road W., Kowloon, Hong Kong  
TEL: +852-2397-2505 FAX: +852-2397-6080

**CHINA OFFICE : ANLY TECHNOLOGY (WUXI) CO., LTD.**

2F, Building A, Plot 1, No. 28, Zhanhong Rd., Xinwu Dist., Wuxi, Jiangsu, P.R.China  
TEL: +86-510-85304801-3

**MALAYSIA OFFICE : JUSTY ELECTRONICS (M) SDN. BHD.**

No.1, Jalan 6/89B, Kawasan Perindustrian Trisegi, Batu 3 1/2 Off Jalan Sungei Besi, 57100 Kuala Lumpur, Malaysia  
TEL: +60-3-7983-5758 FAX: +60-3-7981-5052

**INDONESIA OFFICE : PT. ANLY ELECTRONICS INDONESIA**

Jl. Pangeran Jayakarta 117/B9, Jakarta Pusat, 10730 Indonesia  
TEL: +62-21-624-8436 FAX: +62-21-626-1228

NO. APR-W-A