



ANLY TIMER

TRD / ARD STAR- DELTA TIMER



CHARACTERISTIC :

- Design for induction motor starter (Y- Δ)
- Made-to-order Y-to- Δ change-time from 0.1S to 0.5S
- Y-to- Δ change-time variable from 0 to 1S*
- Short reset time for repeat operations
- 30S and 60S standard time ranges
- CE certified

SPECIFICATION :

Operating voltage	AC(V): 110, 220, 240
Allowable operating voltage range	85~110% of rated operating voltage
Rated frequency	50 / 60 Hz
Contact rating	250VAC 5A (resistive load)
Reset time	TRD MAX 0.3s ARD MAX 0.2s
Power consumption	Approx. 3VA
Life	Mechanical: 5,000,000 times Electrical: 100,000 times
Ambient temperature	-10 ~ +50°C
Ambient humidity	MAX 85%RH
Weight	TRD-N/NT/NC Approx. 230g TRD-ND/NDT Approx. 210g ARD Approx. 160g

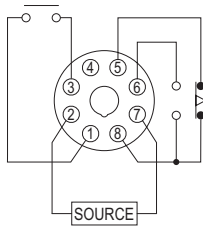
Note: "*" indicates applicable to TRD-NC series only

TYPE SELECTION :

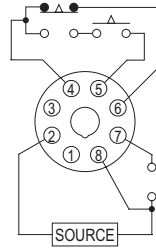
Type	TRD-N	TRD-NT	TRD-NC	ARD	TRD-ND	TRD-NDT
Time range	30s, 60s Variable				1 ~ 63s DIP switch setting	
Change time	Standard 0.1s		Variable 0~1s	Standard 0.1s	Standard 0.1s	
Connection	N Type	T Type	N Type	ARD	N Type	T Type
Dimensions	61H x 49W x 70D			50H x 40W x 57.5D	61H x 49W x 70D	

CONNECTION :

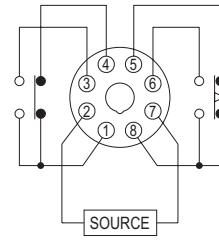
N Type



T Type

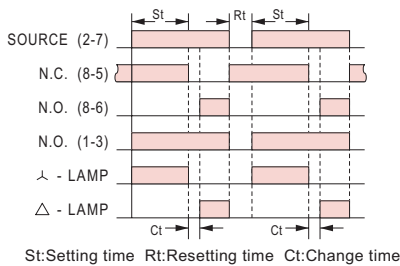


ARD

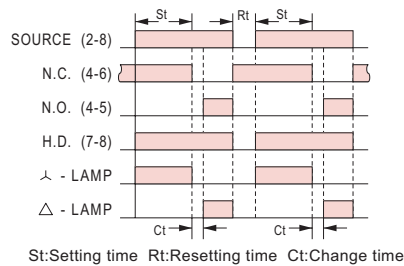


TIMING CHART :

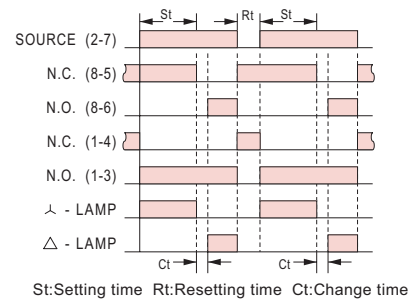
N Type



T Type

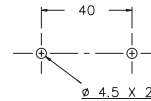
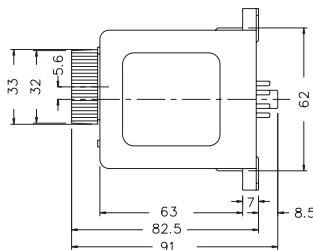
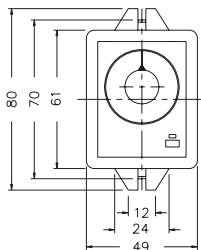


ARD

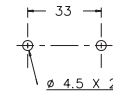
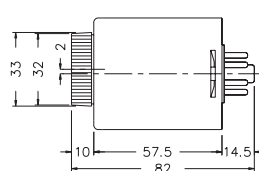
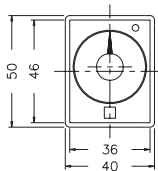


DIMENSIONS : (mm)

TRD N type(Surface Mounting): Using 8PFA Socket



ARD N type(Surface Mounting): Using PF085A Socket & FH-3



ONLY ELECTRONICS CO., LTD.

<http://www.ONLY.com.tw>

TAIWAN MAIN OFFICE : ONLY ELECTRONICS CO., LTD.

No.19, Lane 202, Fushou St., Shinjuang City, Taipei, Taiwan 242
TEL: +886-2-2996-3202 FAX: +886-2-2996-2017

MALAYSIA BRANCH : JUSTY ELECTRONICS (M) SDN, BHD.

No.1, Jalan 6/89B, Kawasan Perindustrian Trisegi, Batu 3 1/2 Off Jalan Sungei Besi, 57100 Kuala Lumpur, Malaysia
TEL: +60-3-7983-5758 FAX: +60-3-7981-5052

HONG KONG BRANCH : ONLY ELECTRONICS (HK) LTD.

Flat K, 13/F, Edward Mansion, 141 Prince Edward Road W., Kowloon, Hong Kong
TEL: +852-2397-2505 FAX: +852-2397-6080

SHANGHAI BRANCH : ONLY TECHNOLOGY (WUXI) CO., LTD.

Room 13G, No.831, Xinzha Rd., Jingan District, Shanghai, China 200041
TEL: +86-21-6218-3300 FAX: +86-21-6217-5911